



D-LIS CONTROLLER 1.2

User Guide

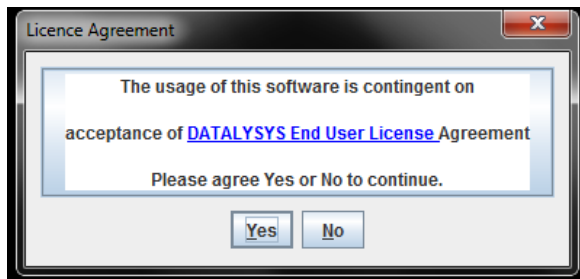
This document explains the steps for Installation, Configuration & Usage of
D-LIS Controller Module.

DATALYSYS LLC
6063 Frantz Rd, Unit 206
Dublin, OH – 43017
614-495-0260
contact@datalysys.com

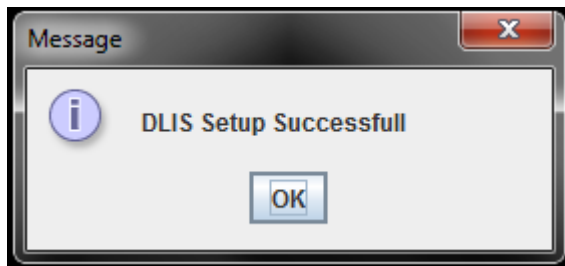
Installation Steps:

Steps to install the software components

1. Download **DLISetUp.jar**
2. Double click **DLISetUp.jar** to execute.
3. Click **Yes** to accept agreement

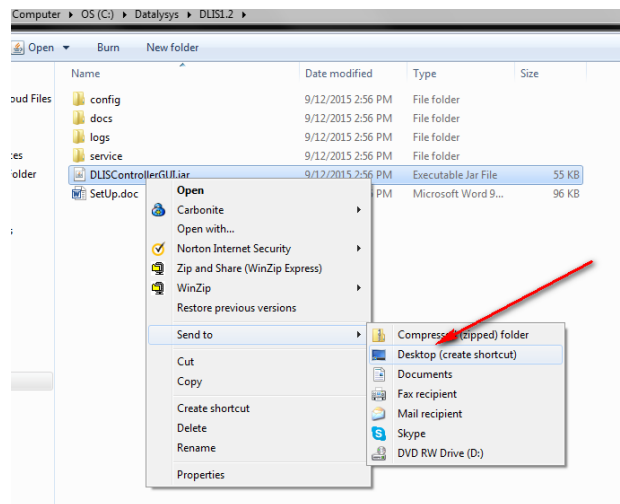


4. Once the installation is Complete, you will see this message.



5. The Setup program has copied files to **C:\Datalysys**

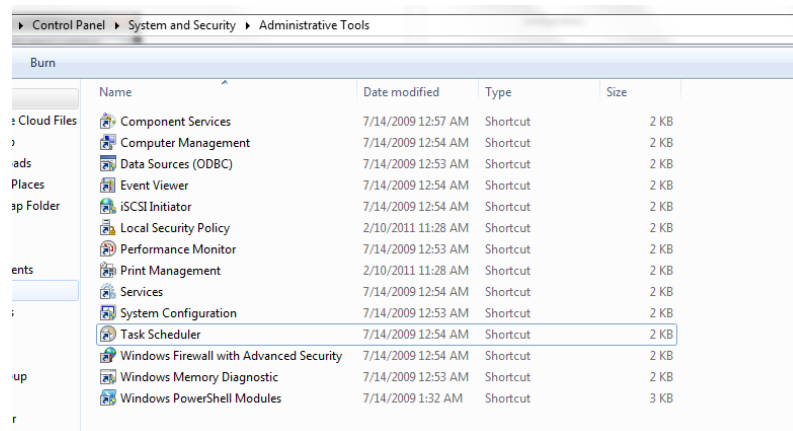
- Go to C:\Datalysys\DLIS1.2 and create shortcut of the **DLISControllerGUI.jar** on the Desktop.



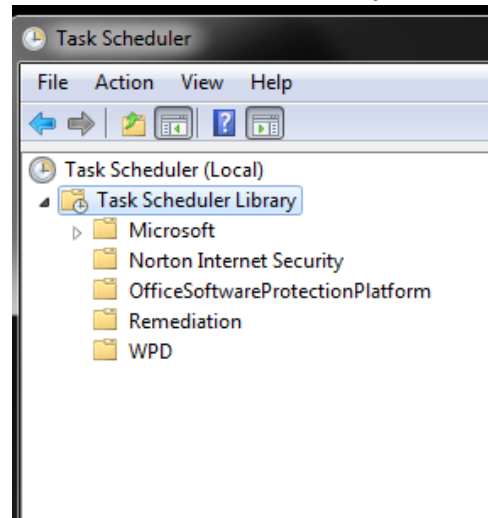
Configuration Steps:

Steps to set up as a background Service

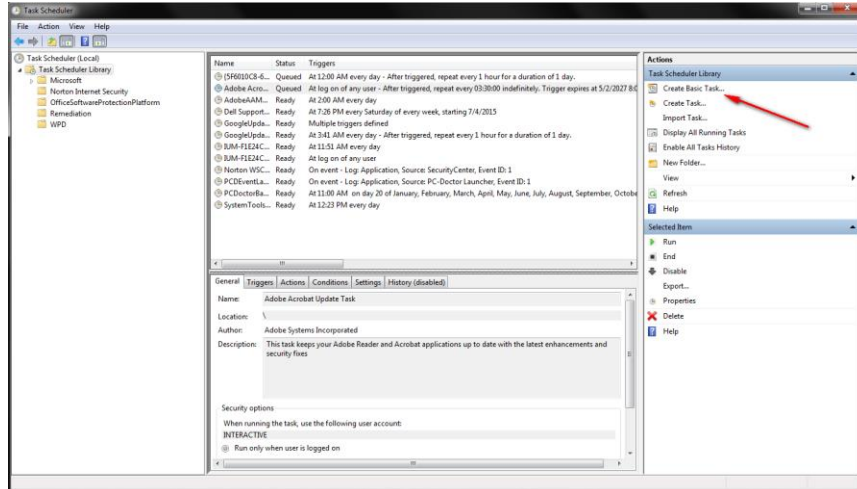
1. Login as Administrator on the computer where the DLISController is set up.
2. Go to **Control Panel\System and Security\Administrative Tools**
3. Open **Task Scheduler**



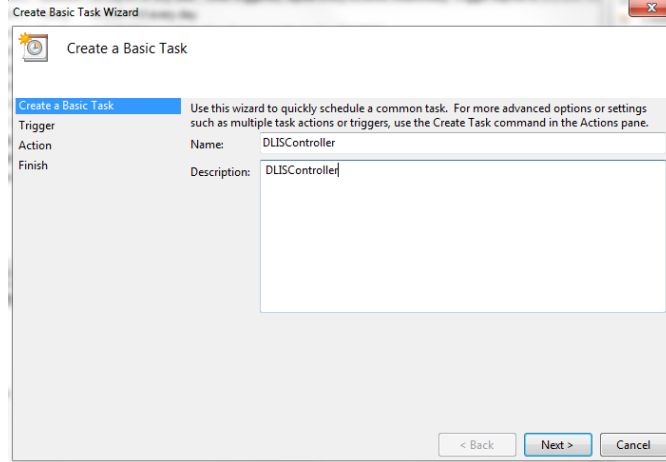
4. Click on **Task Scheduler Library**



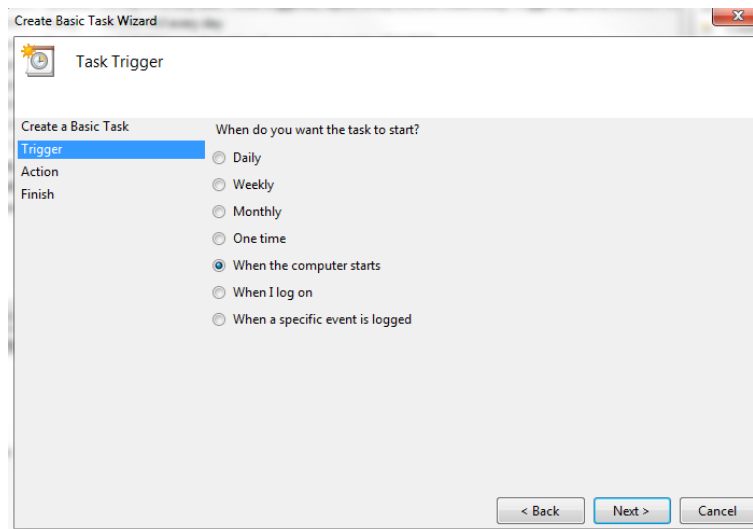
5. Create Basic Task



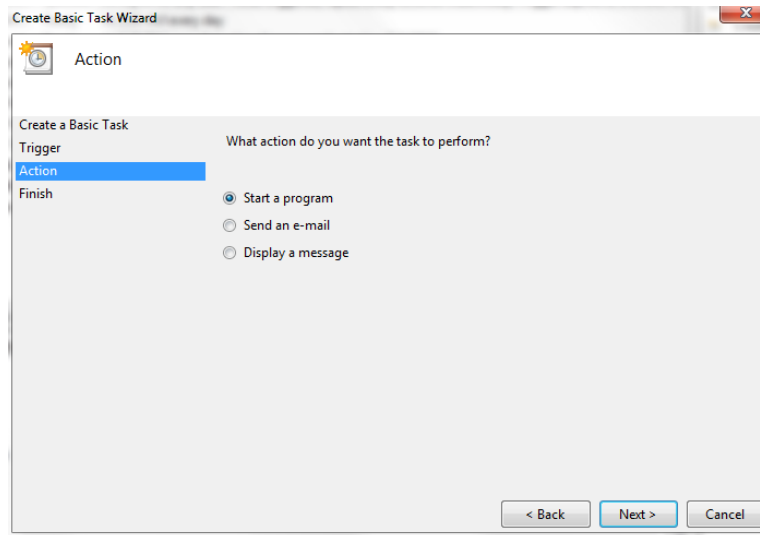
6. Give Name & Description of the task



7. Set Task Trigger as **When the Computer Starts**

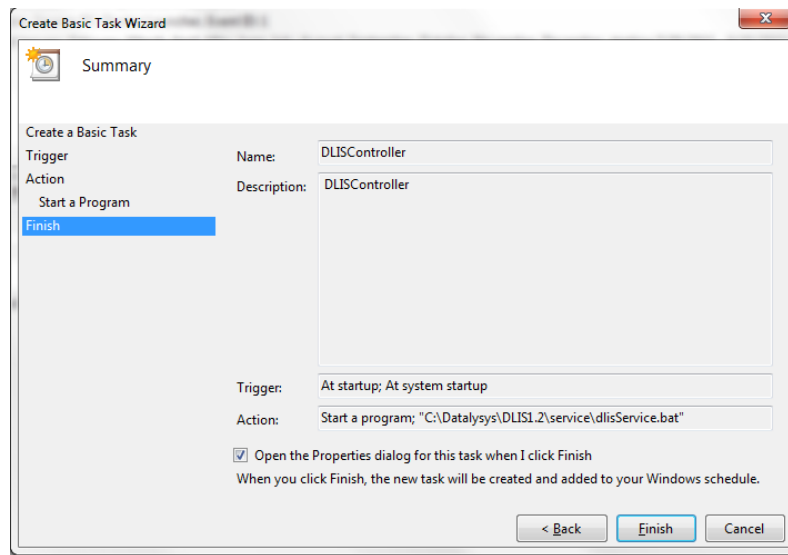


8. Set Action as **Start a program**

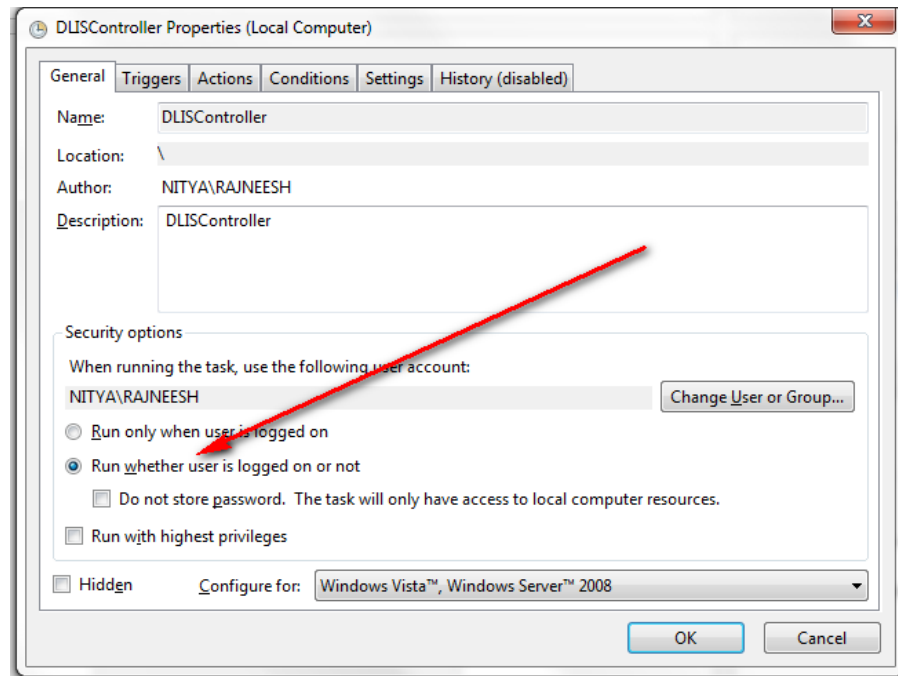


9. Copy the below path in the Program/script
"C:\Datalysys\DLIS1.2\service\dliService.bat" (note: include double quotes)

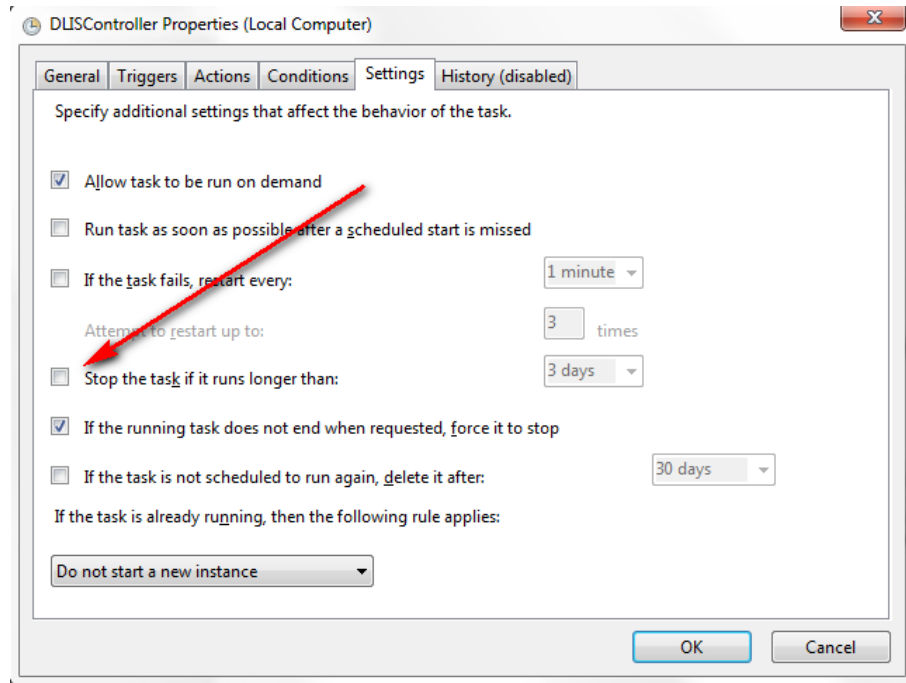
10. Check the Open Properties dialog and Click Finish.



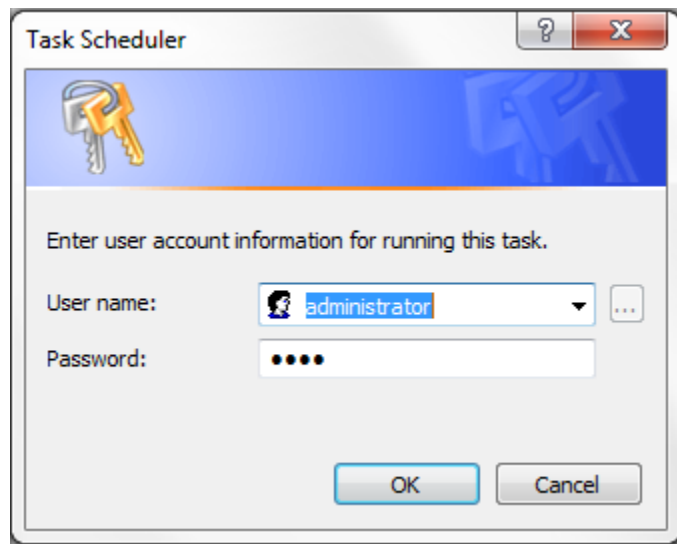
11. On the General tab of the Properties window that open up, Select Run whether user is logged on our not



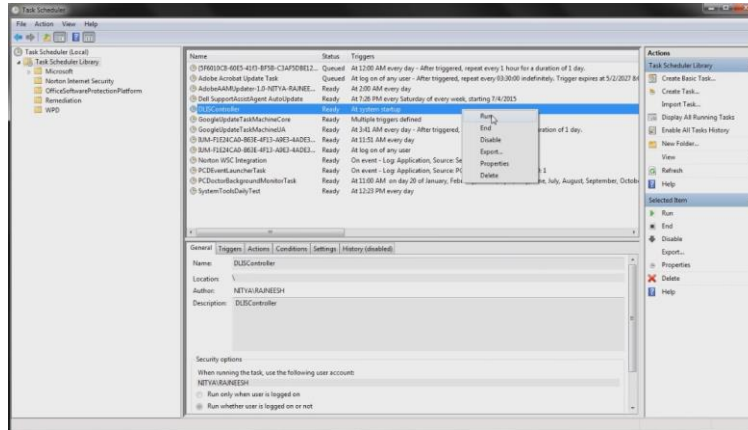
12. On the Settings tab Uncheck **Stop the task if it runs longer than**



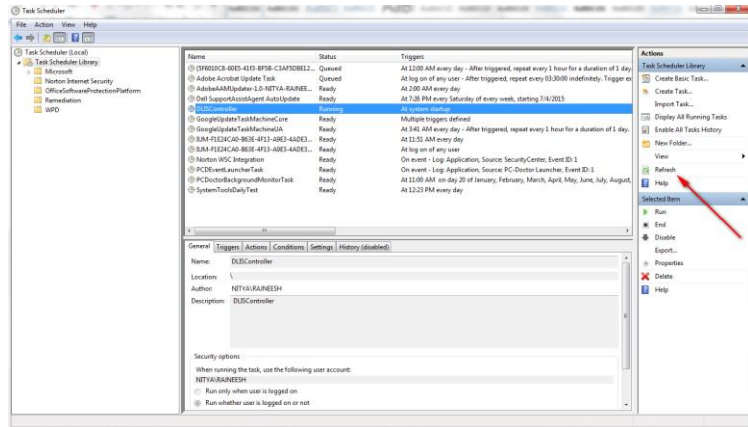
13. Click OK, the System Prompts for an Administrator password



14. The new Service is now available in the Task List. Right Click the Task and click **Run** to start the service.



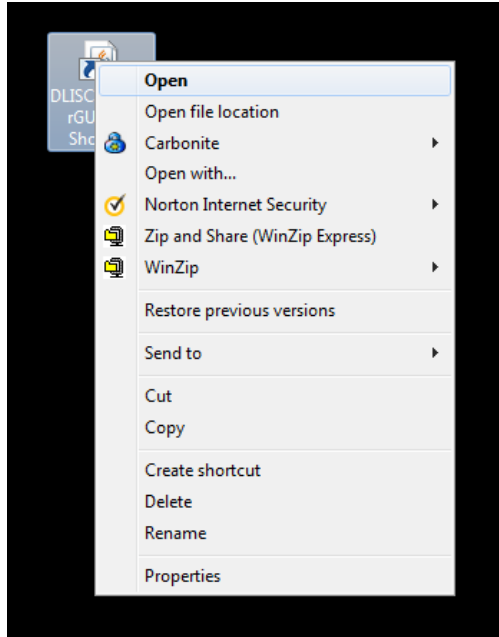
15. Click **Refresh** to see the Task Running.



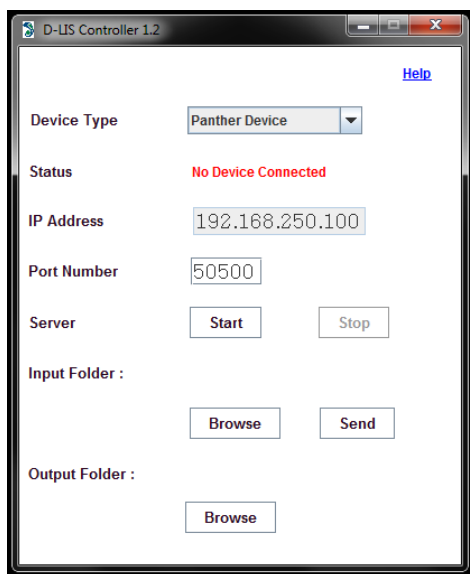
16. The Configuration Setup is complete if the task **DLISController** is in **Running Status**.

Usage Steps:

1. Open the **DLISControllerGUI** from the desktop shortcut.



2. The Controller GUI will open in a window as below



3. Click on **Browse** button to select the **Input & Output** Folder that send and receive files from the Panther Device.
4. Click **Start** to start the Communication with Panther Device.
5. **Stop** the communication before changing Input & Output folder locations
6. Even though this window is closed, the Controller will continue to run in the background.
7. This GUI is used to start & stop communication with panther device when the underlying DLIServer is running as a Service which is set up using the steps laid out in the **Configuration** section.
8. Use **Help** button for documentation.